

From: [OCDEL Bureau of Certification](#)
To:
Subject: An Important Message from The Bureau of Certification: COVID-19 Phased Reopening: Child Care Providers in Yellow Counties
Date: Friday, May 15, 2020 8:02:18 AM

This email newsletter update provides helpful information from the Bureau of Certification.
Please do not reply to this email, as this account is not monitored.



COVID-19 Phased Reopening: Child Care Providers in Yellow Counties

You are receiving this email because your child care facility is located in a Pennsylvania county **Governor Wolf is opening, effective May 15, 2020**. Child care programs in counties in the Yellow Phase are free to operate without a waiver.

If you have remained closed during the **Governor's proclamation**, you have much to consider when deciding whether to open your facility or not. Please refer to the email from **Tuesday, May 12, 2020**, for information to help evaluate your program's ability to safely open.

Please follow the steps below by **May 22, 2020**, to ensure your program's status is correctly reflected in public searches for child care.

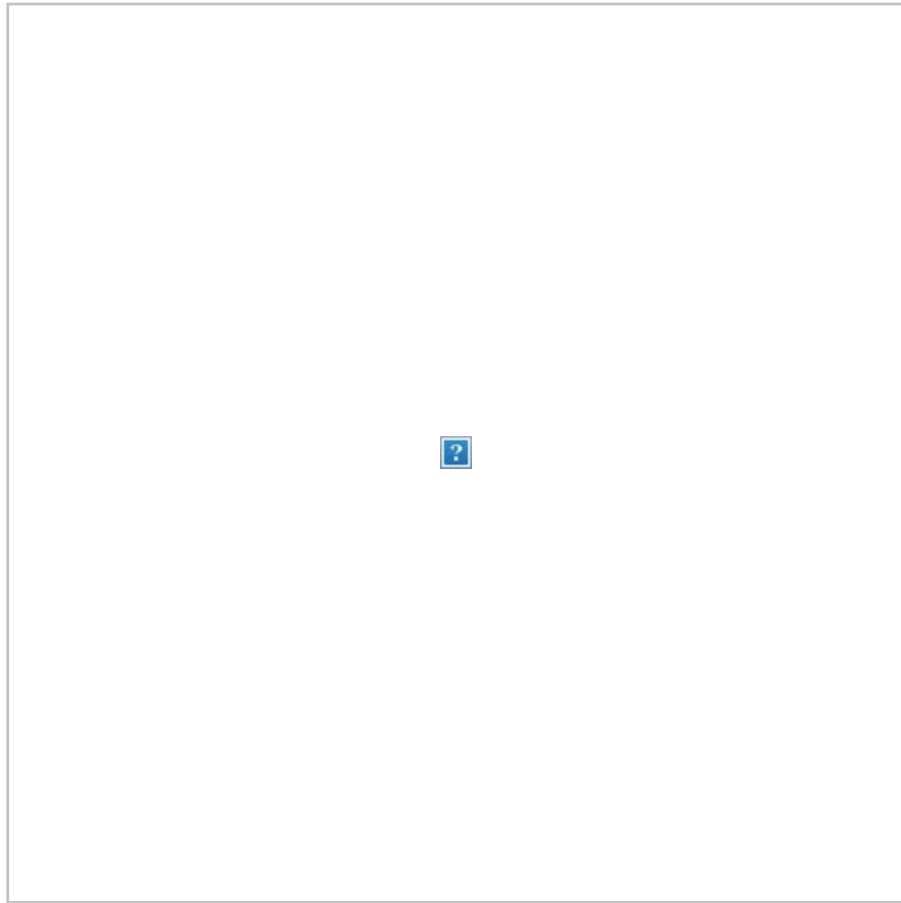
Programs operating on a waiver: You do not need to notify Certification and you may continue to operate as you have been. You will appear in COMPASS searches and the Early Learning Resource Center (ELRC) will refer families to your program as appropriate.

Programs closed and now opening: You do not need to notify Certification and you may open as of May 15, 2020. You will appear in COMPASS searches and the ELRC will refer families to your program as appropriate.

Programs delaying opening: Please email RA-PWOCDELFacilclose@pa.gov your decision to delay opening and temporarily remain closed. You will still appear in COMPASS searches, but the ELRC will not refer families.

Programs permanently closing: Please notify the [regional OCDEL Certification](#)

office and return your certificate of compliance. You will no longer appear in COMPASS searches and the ELRC will not refer families.

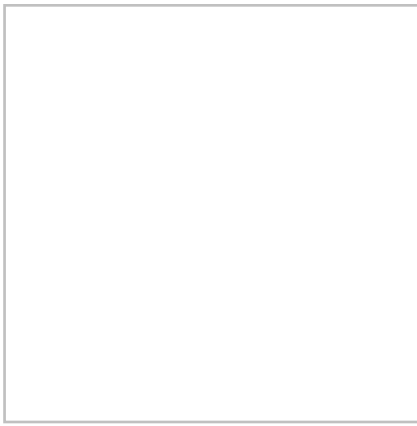


The Pennsylvania Office of Child Development and Early Learning supports families and their children, from prenatal through school age, by using data, research and stakeholder guidance to assure high quality services.

PA's Promise for Children | 200 N. 3rd St., 3rd Fl., Harrisburg, PA 17101

[Update Profile](#) | [About Constant Contact](#)

Sent by ra-dpwocdnet@pa.gov in collaboration with



Try email marketing for free today!

