

ANNOUNCEMENTS AND REMINDERS:

- * ALL PARTICIPANTS ARE AUTOMATICALLY MUTED.
- *QUESTIONS FOR SPEAKERS SHOULD BE SHARED IN THE CHAT BOX.

* THIS MEETING WILL BE RECORDED, THE RECORDING WILL BE AVAILABLE AT <https://www.firstup.org/sepecc/> BY END OF DAY.

SEPECC Meeting

Tuesday, October 12,2021

Meeting will begin at 9:00.

Agenda:

9:00 Welcome

9:05 Federal & State Budget/Funding Updates

9:15 Advocacy Skill Building

9:45 ELRC & OCDEL Announcements

10:15 Special Presentation: Managing COVID
& Self-Care Moment

10:30 Community Partner Resources

10:50 Wrap Up

10:55 - 11:10 Breakout Groups (Optional)

MARY GRAHAM,
CHILDREN'S VILLAGE

TYRONE SCOTT,
FIRST UP

BUDGET UPDATES

SEPECC DAY OF HIRE FOR CHILD CARE - UPDATE

535 programs participated in Day of Hire throughout Southeast PA!

Please complete this **DAY OF HIRE SURVEY** by **10/14/2021** to help us learn more about your experience and to guide planning of future events.

We raised awareness with media & press coverage; here's a sampling:

- <https://youtu.be/J9s63CRGI5E>
- https://youtu.be/_ZiOuKUujec
- https://youtu.be/-_losuhKduA
- <https://youtu.be/5Sxx3tGqh8I>
- <https://youtu.be/ED2I7e7m-sQ>
- <https://youtu.be/eB5qywr7EK0>
- <https://philadelphia.chalkbeat.org/2021/10/5/22710458/alarming-shortage-of-child-care-workers-in-philadelphia-prompts-recruitment-event>
- <https://why.org/articles/underlying-all-the-labor-shortages-a-crisis-in-the-child-care-sector-creating-a-vicious-cycle-for-working-parents/>

Including Family Child Care in State- and City-funded Pre-K Systems

On **Wednesday, October 13, 2021, 11:30-12:30 Eastern**, join Home Grown, NIEER, state and city Pre-K leaders, and special guests from the U.S. Department of Education and the Office of Early Childhood Development for a conversation about the inclusion of Family Child Care (FCC) in public Pre-K systems. This session will include a discussion of findings from the newly released report from NIEER, funded by Home Grown, [Including Family Child Care in State- and City-funded Pre-K Systems: Opportunities and Challenges](#). As the nation looks to make historic investments in pre-K, FCC programs can help ensure that we reach traditionally underserved communities, including Black and Brown, rural, and low-income families and those who work nontraditional or unpredictable schedules, groups that are more likely to use home-based care. Pre-K in FCC programs exist around the country and there is much to learn from these places as we consider how best to design more inclusive systems.

Speakers include:

- GG Weisenfeld, Senior ECE Policy Specialist, National Institute for Early Education Research
- Natalie Renew, Director, Home Grown
- Katie Hamm, Deputy Assistant Secretary, Administration for Children and Families, Office of Early Childhood Development
- Miriam Calderon, Deputy Assistant Secretary, Early Learning, U.S. Department of Education
- Monica Liang-Aguirre, Director, Early Learning, Seattle Department of Education and Early Learning
- Kate Rogers, Vermont Agency of Education
- **Adrienne Biggs, Owner, Lil Bits Family Child Care Home (Philadelphia)**

ADVOCACY SKILL BUILDING

SEPECC ADVOCACY WORKGROUP:

- DAMARIS ALVARADO
- LAVERNE
CHEESBORO
- ELEANOR LEVIE
- ELIZABETH OZER
- SHAWN TOWEY
- DIONNE WRIGHT-
CHAMBERS
- MAUREEN QUINN
YAMAMOTO
- ROBYN YOUNGER



> **BREAKING NEWS**

SENATE AGREES TO LIFT DEBT LIMIT, HOUSE VOTES TUESDAY

 **MSNBC**

LIVE > 9:14 ^{AM}

TAKE ACTION & SHARE YOUR STORY

Your story can help leaders and policymakers identify what works, and what doesn't, to advance a safe, affordable, and high-quality early care and learning system for families, providers and communities. **Share yours today!**





KIDS CAN'T



BUT YOU CAN

LEAF IT TO ADVOCATES TO MAKE A DIFFERENCE!



The National Council of Jewish Women (NCJW.org) is a grassroots organization of volunteers and advocates who turn progressive ideals into action. Inspired by Jewish values, NCJW strives for social justice by improving the quality of life for women, children, and families and by safeguarding individual rights and freedoms.

Eleanor Levie
Volunteer advocate
SEPECC Advocacy Committee

email:
EleanorLevie@gmail.com

LEAF IT TO ADVOCACY TO MAKE A DIFFERENCE!



PHOTOS + CAPTIONS = SOCIAL MEDIA POSTS!

@_____ --LEAF your mark on history! Fully fund universal, quality childcare and pre-K! #SolveChildCare #BuildBackBetter

@SenToomey -- Don't LEAF our kids without quality childcare and pre-K! Most important investment you can get behind. #SolveChildCare

@SenBobCasey – Hurray! The Build Back Better Act re-LEAVES us from the staffing crisis, so more kids can access quality childcare and pre-K. #SolveChildCare

Anything less than robust spending LEAVES too many families without quality childcare and the freedom to return to work. #BuildBackBetter



Leaf Collecting

Talk about...

- colors
- numbers
- big and little



Leaf Pressing

Place leaves between...

- pages of a book
- newspaper sheets
- scrap paper
- wax paper

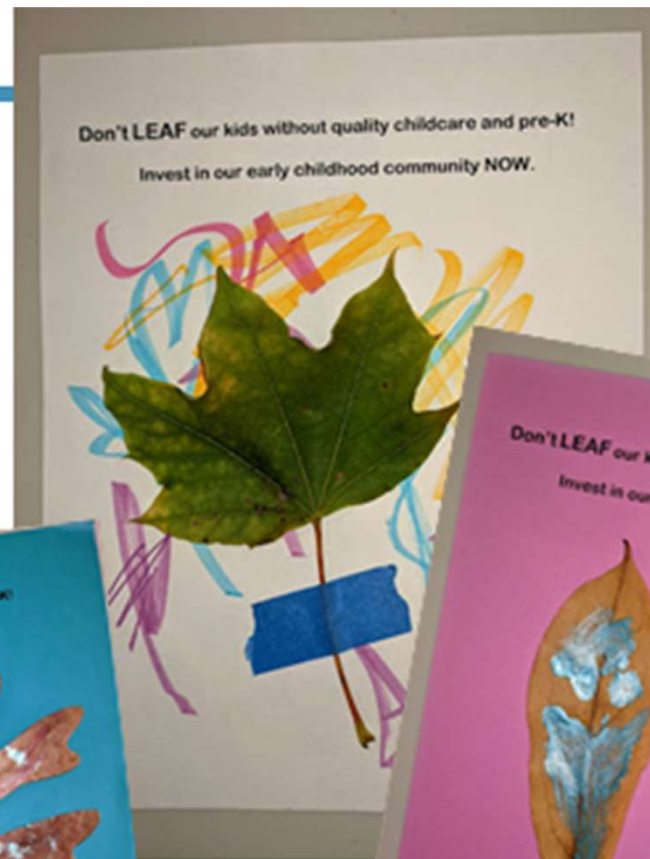
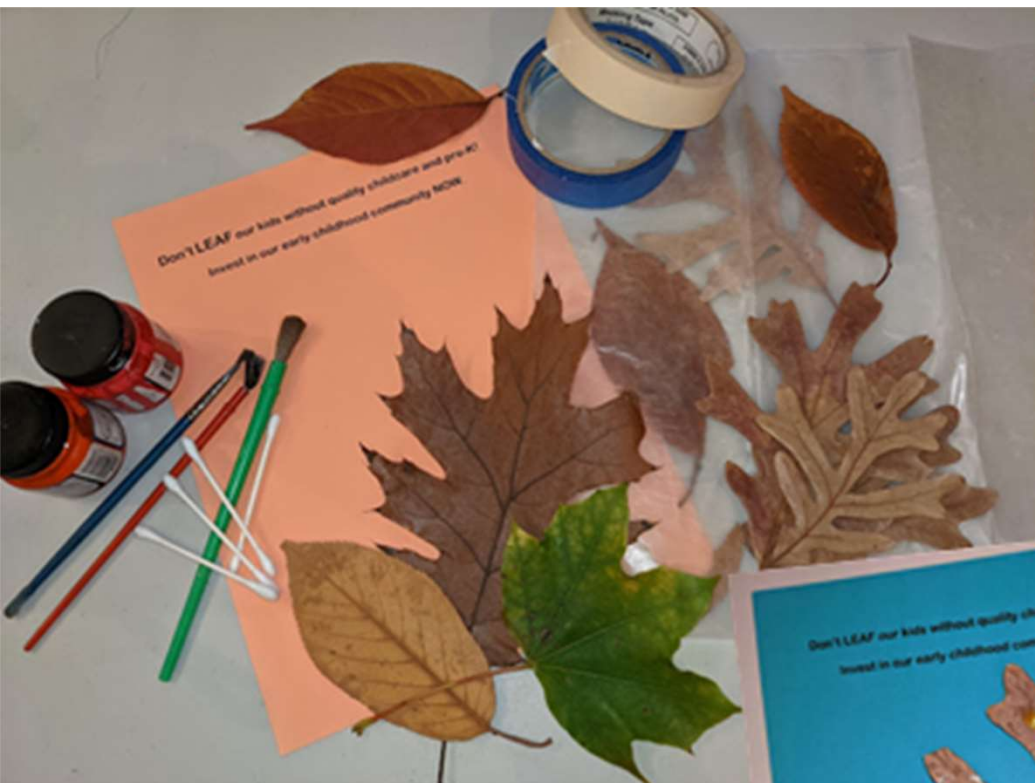
Weight with other heavy books,
or with big canned goods
Leave for several days.



KIDS' CRAFTS

- **Arrange pressed leaves on paper.**
- **Sprinkle crayon shavings and bits over the paper and the leaves.**
- **Add kid's name, caption.**
- **Put wax paper on top. Let a grown-up iron to melt crayon and seal the layers together.**





KIDS' CRAFTS

KIDS' CRAFTS for THANKSGIVING

**Send thank-you cards to our champions!
All policy-makers and legislators
who are actively supporting the
funding we need and deserve
for childcare and pre-K!**



PROVIDER
SPOTLIGHT:
YOUNGER
DAYS

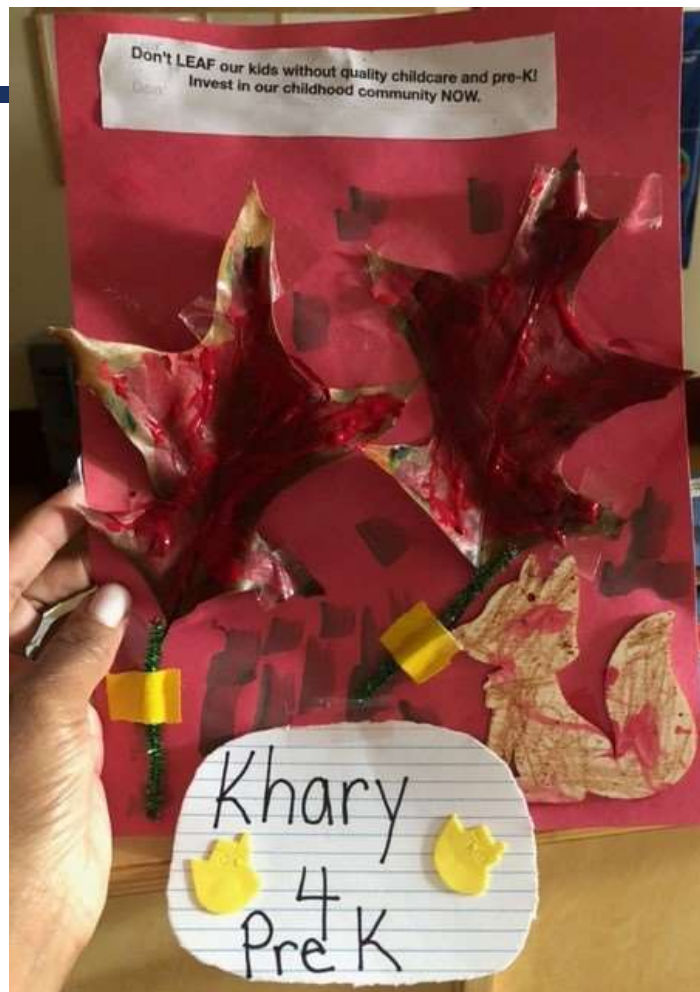
ROBYN
YOUNGER,
PRESIDENT &
DIRECTOR

GWEN DORSEY,
GROUP
SUPERVISOR

YOUNGERDAYS
@AOL.COM









Updates from OCDEL and ELRCs

KAREN GRIMM-THOMAS
C-KGRIMMTH@PA.GOV

DIANE GETZINGER - PHILADELPHIA
DGETZINGER@CARINGPEOPLEALLIANCE.ORG

ANGIE SOMOGYI – BUCKS
ASOMOGYI@CSCINC.ORG

BETSY VASSALLO – CHESTER
BVASSALLO@PHMC.ORG

MAGGIE JOHNSON – MONTGOMERY
MJOHNSON2@MONTCOPA.ORG

TAMMY JOLAOSO – DELAWARE
TJOLAOSO@PHMC.ORG

PAYING FOR COVID-RELATED CLOSURES

- [ELRC-Announcement-21-09-Child-Care-Works-Payment-During-the-Ongoing-Novel-Coronavirus-FINAL.pdf \(pakeys.org\)](#)
- ELRC continues to be able to pay for 14 consecutive business days of COVID-related closure or absence (as long as you report appropriately).
 - You must report to both Certification and the Health Department
 - Do NOT enter closed days on your provider profile or invoice. You should mark your invoicing as follows:
 - **Online:** Mark the children absent and enter the “COVID-related absence” comment by clicking on the hyperlink under each child’s name. The comment is very important to make sure you are paid correctly and that the absences aren’t counted toward the children’s annual cap.
 - **Paper:** Mark the children absent using the code CA. This is very important to make sure you are paid correctly and that the absences aren’t counted toward the children’s annual cap.

KEYSTONE STARS UPDATES

- **Delayed rollout of new designation system**
 - Pushing go-live back to early 2022
 - Any designations prior to go-live will need to use the Document Uploader

- **STARS Designation Extensions**
 - ELRC-Announcement-21-08
 - One-year extension of all designations expiring 10/1/2021 through 9/30/2022

STAR EXTENSION PROCESSES BY REGION

- **ELRC 15 (Delaware County)** – Contact your quality coach for details
- **ELRC 16 (Bucks County)** – We are reaching out to providers at the normal time to see if they would like to renew on schedule or to have their designation extended for the full year. We're reminding providers that once their designation is extended, they cannot then renew, but could pursue movement.
- **ELRC 17 (Montgomery County)** – Contact your quality coach for details
- **ELRC 18 (Philadelphia County)** – Same as Region 16. Extensions will be processed in PELICAN about 1 week prior to expiration (unless a provider renews timely).
- **ELRC 19 (Chester County)** – At approximately 90 days prior to expiration the Quality Coach will reach out to the program to determine whether they wish to take the extension or move forward with renewal, referencing the OCDEL released communication for clarification. If a program chooses to take the extension rather than renew, we will request that they submit that information to us in writing. We will be using this year to create meaningful and thoughtful cohorts and to facilitate provider “Chit Chat” meetings to work through the standards, strengthen practices, and update policies and how they are implemented. We also plan to include special guest speakers to talk about new and inventive methods to inform provider practices. Providers should direct all questions or concerns about this process to their Quality Coach.

ARPA STABILIZATION GRANT UPDATES/REMINDERS

- The application will be open until January 31, 2022. Apply through your Organization Profile on the PD Registry.
- You can check the status of your application in the PD Registry. If the Quality Dashboard lists your ARPA grant as
 - “Approved” – your grant has been approved by ELRC (click on Case Details to see your total award amount)
 - “Under Review” – ELRC has your grant ready to process
 - “No Cases in Progress” – **you still have to complete and submit your application**
- Once you apply, if you click Applications on the Quality Dashboard, you will see “*Your program does not meet the requirements for this case*” under the ARPA Stabilization Grant. **This is because you have already applied!**
- Your grant will be paid out over 6 monthly payments, and you will receive your first payment within approximately 30 days of submitting your application.
- You have 8 months from receipt of your first payment to spend the funds.
- All providers will have to report on use of the funds. 15% will have their grants audited by the ELRC.

ARPA STABILIZATION GRANT RESOURCES

- For help creating an individual account on the PD Registry: <https://s35729.pcdn.co/wp-content/uploads/2021/08/Create-or-Locate-a-PD-Registry-Account-Aug-2021.pdf>
- For help claiming your Organization Profile: <https://s35729.pcdn.co/wp-content/uploads/2021/07/How-to-Claim-an-Unregistered-Organization-Profile-final.pdf>
- Learn how to apply by viewing the tutorial video (<https://youtu.be/n9bcD0PYlgg>) or the tip sheet (<https://s35729.pcdn.co/wp-content/uploads/2021/09/How-to-Apply-For-The-ARPA-Stabilization-Grant-09.2021-1.pdf>).
- FAQ on the PA Keys website: <https://s35729.pcdn.co/wp-content/uploads/2021/09/ARPA-Child-Care-Stabilization-Grants-Provider-FAQs-9.17.21.pdf>
- ELRC 18 sponsored a webinar by Children's Village to help providers maximize their grant, think about potential uses, tax consequences, and reporting/tracking Links to the recording and slides are listed below. (NOTE: To view the webinar, you must download it first. Otherwise the webinar will cut off after 15 minutes.)
 - Webinar recording: <https://www.dropbox.com/s/rawgbl9xdx5ygz0/video1095716501.mp4?dl=0>
 - Slide deck: <https://www.dropbox.com/s/penqc9wvpy62n9t/ARPA%20slide%20deck.pdf?dl=0>

ARPA STABILIZATION GRANT CONTACTS

REGION 15 (Chester Co)

- Angelique Hiers, hiersa@delcohsa.org
610-713-2478

REGION 16 (Bucks Co)

- Angela Somogyi, asomogyi@cscnc.org
215-486-2524 ext. 1-800

REGION 17 (Montgomery Co)

- Margaret Johnson, MJohnson2@montcopa.org
610-278-1484
- Jeanine Moser, jmoser@montcopa.org
610-278-5194

REGION 18 (Philadelphia Co)

- Diane Getzinger, 267-504-4179
dgetzinger@caringpeoplealliance.org

REGION 19 (Chester Co)

E-mail is STRONGLY preferred

- Susan Moylan, ELRC 19 STARS Manager –
smoylan@phmc.org - 215-756-7328
- Betsy Vassallo, ELRC 19 Director –
bvassallo@phmc.org - 215-606-7328

Special Presentation: Managing COVID

Amy Requa, The PA key
amyreq@pakeys.org



THE PENNSYLVANIA KEY

MANAGING COVID

COVID-19 Health and Safety System Supports for Providers



CDC GUIDANCE: LAYERED MITIGATION STRATEGIES



The Swiss Cheese Respiratory Virus Pandemic Defense

Stay home if sick
Physical distance
Masks
Hand hygiene
Cleaning, sanitizing, and disinfecting
Avoid touching your face
Avoid crowds
Fast, effective testing and tracing
Ventilation
Public health testing and tracing
Quarantine and isolation
Vaccines



Individual Actions | Community Actions

Each layer has imperfections.
Multiple layers improve success.



VENTILATION & OUTDOOR LEARNING



Evergreen strategies:

- Maximize ventilation and air filtration
- Natural ventilation
- HVAC improvements
- Filtration: MERV Ratings, HEPA
- Portable Air Cleaners

PA DOH HEALTH ALERT NETWORK (PA-HAN)

PA-HAN #600 Health Advisory

Date: 9/30/21

COVID-19 Vaccination for Pregnant People to Prevent Serious Illness, Deaths, and Adverse Pregnancy Outcomes from COVID-19



Pennsylvania's Infant Early Childhood Mental Health Consultation (IECMHC) Program

bright

 bright start.  bright kids.  bright future.

WHEN SHOULD I REQUEST IECMHC?



- Are you concerned about the social emotional development and/or behavior of a young child who is enrolled in a childcare facility?
- Do you want to connect with a consultant to talk about strategies that support social emotional development of all kids?

IECMHC OFFICE HOURS EXPANSION



The Pennsylvania Key IECMHC Virtual Office Hours

The Pennsylvania Key Infant-Early Childhood Mental Health Consultation (IECMHC) Program is offering a new service: **IECMHC Virtual Office Hours**

Are you looking for support with:

Helping a child who is struggling with behavior, attachment, peer relationships or emotion regulation?
Helping teachers and families with self-care, stress, and coping, but not sure what to do next?

IECMHC Virtual Office Hours is now accepting appointments for office hours throughout Pennsylvania!

IECMH Consultants are available by appointment to provide IECMHC Virtual Office Hours consultation via telephone or video conference. IECMHC Virtual Office Hours is a short-term, collaborative, problem-solving conversation to help you find next steps for:
Child Social-Emotional Concerns | Child Behavioral or Developmental Concerns
Emotional Well-being of Teachers and Caregivers | Partnering with Families

Who can request IECMHC Virtual Office Hours?

Services are available at no cost to families, child care professionals and specialists supporting Keystone STARS child care programs. We invite:

- Teachers, directors, and staff in center, family, and group-based child care programs
- Families with children attending child care programs
- Early Intervention (Birth-5 & 3-5) professionals
- Keystone STARS Quality Coaches
- Mental Health/Behavioral Health agencies
- Home Visiting and Family Support Programs

How can IECMH Virtual Office Hours help your program?

IECMH Consultation helps adults strengthen their relationships with young children and build capacity to respond to children's social-emotional needs. IECMHC can help reduce caregiver stress, as well as increase caregivers' reflective practice skills.

- Figure out what's really going on when a child exhibits challenging behaviors
- Reflect and respond to problem behaviors with the power and impact of nurturing relationships
- Build partnerships with families
- Share community resources
- Consider your next steps and where to go from here

How can you request an IECMHC Virtual Office Hours appointment?

Appointments are held on the first and third Fridays of the month, or other days/times by request. To schedule an appointment, [register here](#).

- IECMH Consultants are available by appointment to provide IECMHC Virtual Office Hours consultation via telephone or video conference.
- IECMHC Virtual Office Hours is a short-term, collaborative, problem-solving conversation to help you find next steps for:
 - Child Social-Emotional Concerns
 - Child Behavioral or Developmental Concerns
 - Emotional Well-being of Teachers and Caregivers
 - Partnering with Families



Pennsylvania's Infant and Early Childhood Mental Health (IECMH) Consultation is a free resource that supports children's social-emotional development from birth through age five within early learning programs participating in Keystone STARS. [Learn more about Pennsylvania's Infant/Early Childhood Mental Health Consultation Program.](#)



SELF-CARE EXPERIENCE

"Brief Loving Kindness for Self and Others"

<https://insig.ht/GXCM8ZYGbkb>

Thank You!

COMMUNITY PARTNER UPDATES

Samantha Caimi
City of Philadelphia

Stephanie Blake
Children First

Rosanna Matos & James Nicholson
First Up



SAMANTHA CAIMI

SAMANTHA.CAIMI@PHILA.GOV

CITY OF PHILADELPHIA
DEPARTMENT OF BEHAVIORAL
HEALTH AND INTELLECTUAL
DISABILITY SERVICES- INFANT
TODDLER EARLY INTERVENTION



STEPHANIE BLAKE

[STEPHANIEB@CHILDRENFIRST
PA.ORG](mailto:STEPHANIEB@CHILDRENFIRST
PA.ORG)

CHILDREN FIRST



Rosanna Matos, First Up
Early Learning Specialist & PD
Instructor
Rosanna.matos@firstup.org

James Nicholson, First Up
Senior Early Learning Specialist
Trauma Informed Initiative Project
Manager
James.nicholson@firstup.org

FIRST UP PRESENTS EQUIP

- Early Childhood Quality Improvement Project (EQUIP) supports Philadelphia ECE centers and family childcare programs desiring to move from STAR level 2 to 3 to 4 through coaching, training, and program evaluation.
- Benefits:
 - High level coaching for teachers and administrators
 - Coaching support to move from STAR 2 to STAR 3 to STAR 4
 - Free professional development
 - Opportunities for teachers to observe high quality classrooms
 - Free program assessments including PAS, BAS, ECWES, ERS to support Continuous Quality Improvement Plans
 - Communities of Practice Peer Learning Circles to support leadership and teaching practices
- Three information sessions:
 - October 13 1:30-2:30
 - October 13 6:30-7:30
 - October 15 1:30-2:30



IDENTIFYING THE NEEDS OF THE LATINX COMMUNITY

With the help of my colleagues at First Up, we created a needs survey and sent that out to as many contacts that we could

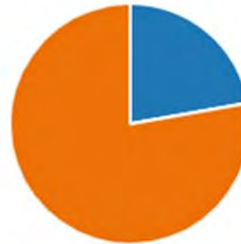
- [Spanish Survey Link](#)



9. ¿Haz participado anteriormente o participa actualmente en alguna iniciativa? (PHL PreK, Success by Six, EQUIP, Curriculum Fund, etc.)

[More Details](#)

- Si
- No



- Have you participated or are currently participating in an initiative?
Orange=no
Blue=yes

12. ¿Está interesado en recibir soportes de mejora de calidad como (STARS, desarrollo profesional, etc.)?

[More Details](#)

Insights

- Si
- No



- Are you interested in receiving High Quality support?
Orange=no
Blue=yes

As you can see the participation is low, but the desire for the support is HIGH.
What is stopping them to seek support?

RESULTS

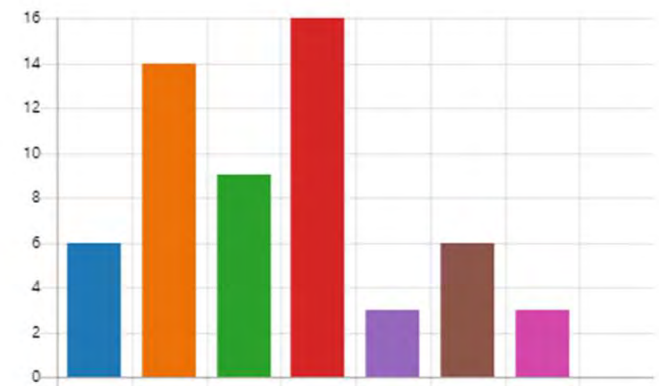
Top barriers identified:

- Unaware of the opportunities out there (red bar)
- Language (orange bar)

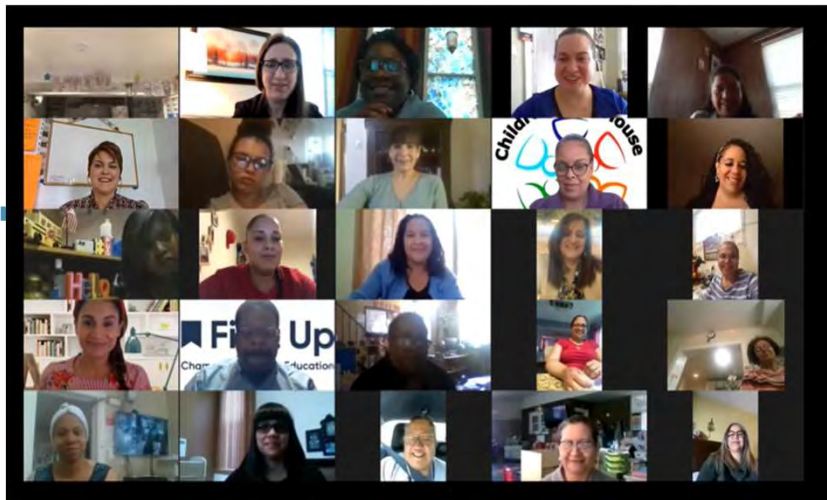
11. Si usted no ha participado en ninguna de las iniciativas enumeradas anteriormente u otra, ¿cuáles han sido las barreras que le han dificultado la participación?

[More Details](#)

● Dificil de llenar o larga aplicaci...	6
● Barrera con el lenguaje	14
● La tecnología	9
● Desconoce las oportunidades ...	16
● Experiencia previa insatisfacto...	3
● Tiempo no era conveniente	6
● No me senti bienvenido/a	3
● Other	0



LATINOS EDUCANDO JUNTOS EN PA



- Mission: *Latinos Educando Juntos en Pennsylvania* has a mission to provide a safe space where Spanish speaking educators can feel empowered and supported as resources are shared, partnerships are created, and their voices are heard. Together we vision this space to be cooperative and engaging to advance providers to the next steps in quality service to the LatinX community.

NEXT STEPS

Invite others to our next meetings:

- October 22, 2021, 1-3pm
 - [Register Here](#)
- November 19, 2021, 1-3pm
- December 17, 2021, 1-3pm

Advocate:

- For materials to be made available in Spanish (applications, flyers, surveys)
- Network with organizations that can provide you with support.

First Up is now offering Professional Development trainings in Spanish Virtually and in Person!

Choose from any of these trainings and many more!

Topics	Overview
<i>Out of the Box Series: Art, Library, Blocks, Science, Writing, Math, Music, Lesson Planning or STEAM</i>	Enhance your center time as children learn through play with these new and exciting ideas.
<i>Families as Partners: Concrete Ways to Improve the Relationship</i>	Time, planning, communication, and cultural sensitivity are key elements in establishing this relationship. How equipped are you to take on this task?
<i>Child Observation and Evaluation: Integrative Practice</i>	This course offers participants the opportunity to use their strengths, collaborate with other educators, and develop an action plan to improve childhood observations and assessments.
<i>Interactions and Expressions from Behind the Mask</i>	Support teachers in making the mask manageable by giving them concrete and creative ideas that will still encourage building positive relationships between students/teachers.

Don't see what you are looking for on this list? Please reach out for further information. Our team has a large selection of topics to choose from!

For more information, please contact Alix Cozen at alix.cozen@firstup.org

FIRST UP NOW
OFFERS SPANISH PD!

FIRST UP ECE FELLOWSHIP

- The purpose of the fellowship is to develop leaders and advocates for the ECE community.
- We recruit a wide range of participants from Philadelphia and the surrounding counties. We also recruit a number of individuals who are not Early Childhood Practitioners but also are part of the greater ECE community.
- In addition, we have a one-day trip to Harrisburg during budget season (Early May – early June), and a one-day closing meeting.
- Personal anecdote

-
- **1-Minute Exit Survey** to provide feedback on the effectiveness of today's meeting:
 - **Upcoming Meetings: Nov. 16 & Dec. 21**
 - **Meeting Registration Links** on First Up/ SEPECC
Webpage: <https://www.firstup.org/sepecc/>

MEETING WRAP UP



Advancing quality early care
and education in Bucks, Chester,
Delaware, Montgomery and
Philadelphia Counties

SEPECC

COMMITTEE VOLUNTEERS

Steering Committee

Unis Bey
Laverne Cheeseboro
Traci Childress
Latonta Godboldt
Mary Graham
Jackie Groetsch
Shineal Hunter
Jacki Jay
Kellie Ketchum-Umphrey
Sharon McClafferty
Minette Taylor
Shawn Towey

Advocacy Workgroup

Damaris Alvarado
Dionne Chambers
Eleanor Levie
Elizabeth Ozer
Shawn Towey

Suburban Workgroup

Donna Bartman
Zakiyyah Boone
Jackie Groetsch
Kim Heuschkel
Jacki Jay

Advisory Council

Stephanie Bey
Stephanie Blake
Norma Finkelstein
Diane Getzinger
Pamela Haines
Sara Jann
MaryKay Mahar
Maddy Malis
Elizabeth Ozer
Khadijah Sabir

BREAKOUT ROOMS

We will break out into randomly assigned small groups for all who wish to join.

SEPECC ADVOCACY GOALS- WHAT DO YOU THINK?

Advocacy Goals:

- Being at the table to have say in how federal funds for child care are allocated
- Speaking up for how the state and city should budget and spend on ECE
- Staying on top of changes in OCDEL, i.e. major changes to regulations
- Conversation with elected officials about: compensation, true cost of care, contracts vs. slots, quality improvement, importance of ECE, money needed
- Moving from market rate survey to the cost of care
- Equal treatment of ECE programs

BREAKOUT GROUPS (10 MINUTES)

Questions for Reflection

- What are your strengths in advocacy?
- What's of special interest to you?
- What resources or supports do you need to be an effective advocate?